

BIMMIAN GAUGE FACE

Instructions Created By E46Fanatics.com Member Alec

WHAT YOU NEED:

Torx T-20, Torx T-10, A thin fork or prying tool

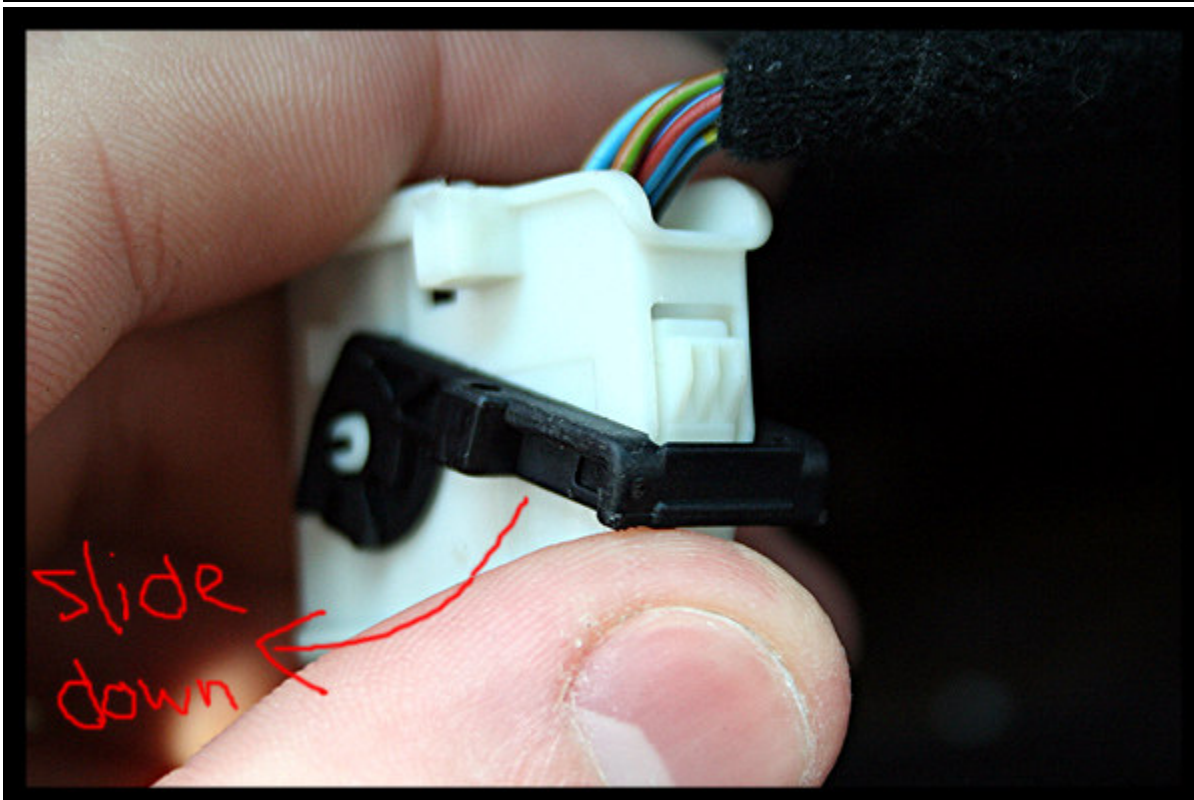
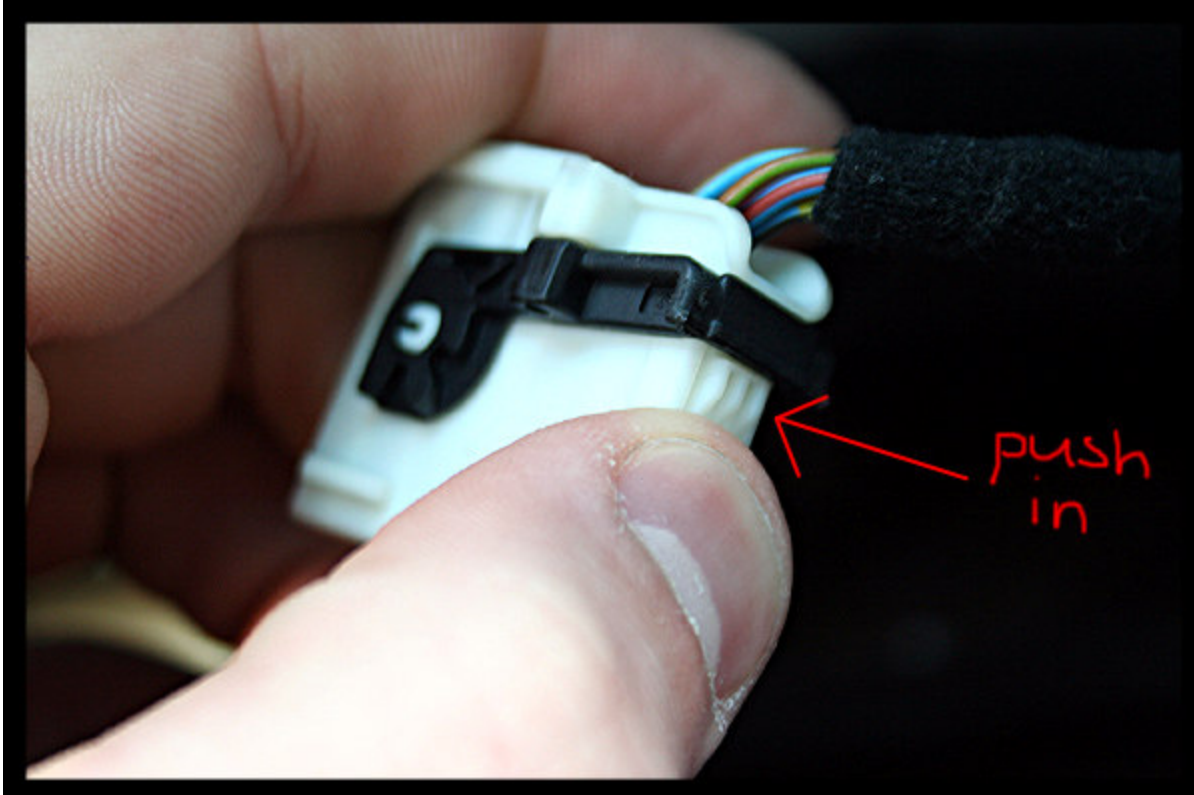
Step 1:

Unscrew the two Torx T-20 screws to get the cluster out. MAKE SURE KEY IS NOT IN IGNITION. Make sure all lights are off in the cluster before beginning.



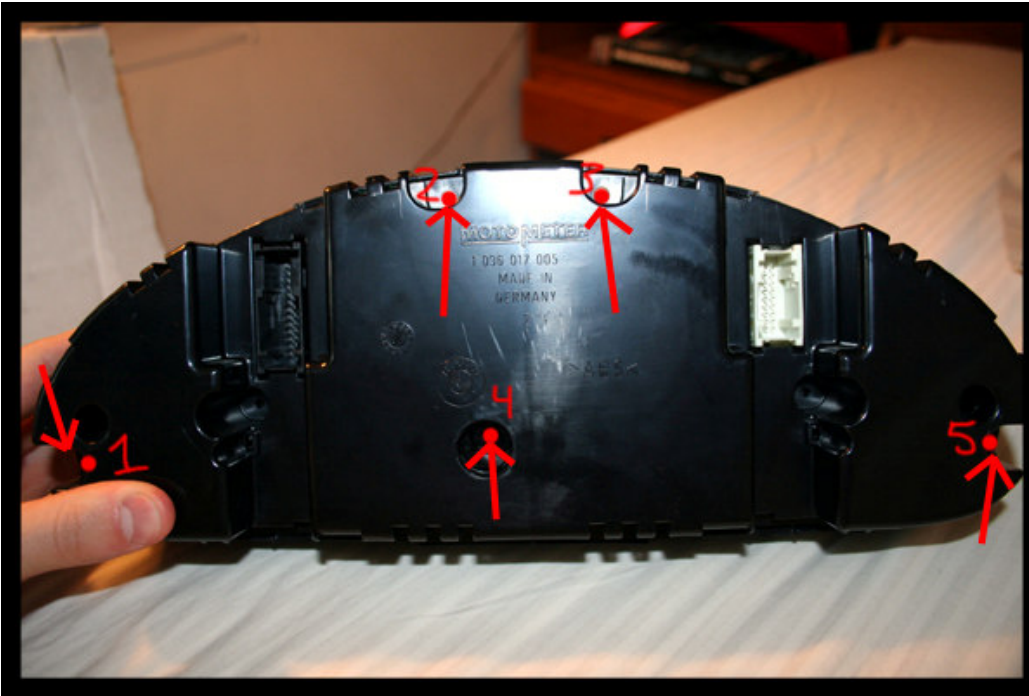
Step 2:

Now, after the cluster is unscrewed and loosened, remove all the wires from the back of the cluster. Here's a quick run-through of how the mechanism works:



Step 3:

Unscrew the next set of Torx T-10 screws.



Step 4:

To take it apart...

- First step, just pull lightly on the back piece to separate it.
- Second step, pull the rubber knobs off (all you do is pull)

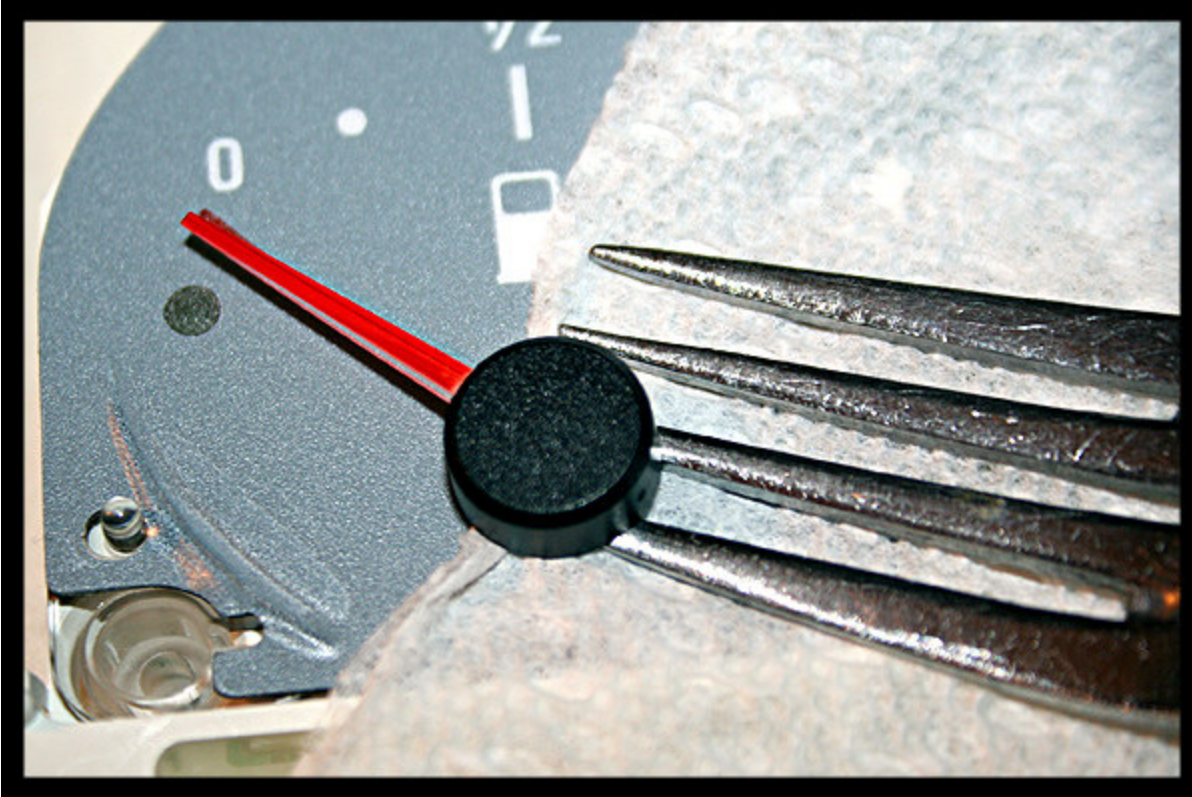


- Third step, just pull the last two parts apart. Now you have three pieces. Obviously, the top part with the glass and the

backing won't be messed with if you're just installing gauge faces. Now would be a great opportunity to install the gauge rings or carbon cluster trim if you purchased them from Bimmian.com as well.

Step 5:

Slide your THIN fork/prying device underneath each needle, and delicately pry it off. Make sure to have something that protects the gauges to avoid scratching.



After prying the needles off, simply take the old gauge face off and slide the new one on.

Step 6:

When you put the needles back on, rotate them all the way over to the left and make sure they all "Zero" in at the same place as they did before. If they go past the 'zero' point, simply rotate them all the way to the right until you feel some resistance, then keep going for as long as you think you'll need to. Then, rotate them to the left until you reach the 'threshold' point (where you start to feel some resistance), and keep going until you're at the zero you want/need.

Step 7:

Reverse the steps above to reinstall.